



SAFE TIRE
BY INTERSPEED

interspeed

SAFE TIRE

no punctures • no spare tire

POWERED
BY INTERSPEED

COMPANY PRESENTATION

At Interspeed, we believe that driving should be safe and carefree. That's why we are the first and only company on the market to offer professional installation of a protective tire compound – a solution that prevents punctures and ensures you can drive safely, wherever you are.

Our mission goes beyond simply applying the compound – we are building a community of drivers who put safety and comfort on the road first.

We believe in the power of unity and collaboration, and that's why we continuously improve our services to transform the driving experience for the better.

SAFE TIRE by Interspeed



WE CAN EXPERIENCE THESE SITUATIONS EVERY DAY

Unfortunately, in the situations mentioned above, apart from the long, exhausting, and expensive process of towing, repair, or wheel replacement – what else can be done?

Responsible drivers leave nothing to chance – that's why they rely on the SAFE TIRE Interspeed protective tire compound.



At Safe Tire, we've thought of everything.



Environmentally friendly



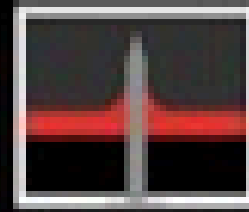
Self-sealing



High performance



Sustainable



SITUATION 1

The protective compound adheres to the object that caused the puncture and forms a sealing layer around it if it remains inside the tire.



SITUATION 2

When the tire is punctured and the object is removed, the compound flows into the hole and seals the opening.

SAFE TIRE: Innovative Technology for Automatic Tire Puncture Repair

Tires with **SAFE TIRE** protective compound feature a special MPN coating, 3–5 mm thick, resistant to all weather conditions. This layer is applied to the inner surface of the tire and, in case of a puncture, instantly repairs the damage, prevents air pressure loss, and significantly reduces the risk of punctures. The result is a safer and more comfortable ride — free from stress and unexpected delays.

Thanks to its advanced characteristics, such as puncture resistance, pressure retention, blowout protection, and noise reduction, these tires allow drivers to travel calmly, safely, and with complete confidence.



- Protection area: tire tread
- Protective layer thickness: 3–5 mm



- Maximum damage length: up to the rim
- Operating temperature range: from -40°C to $+170^{\circ}\text{C}$
- Warranty: 3 years or 50,000 kilometers

Puncture-proof tires are designed to reduce the risk of blowouts and accidents under extreme conditions — such as overloading, damaged roads, or sudden impacts. In other words, they protect you when it matters most.

DRIVING TOWARD NEW ADVENTURES

**SAFE TIRE with its self-sealing function
gives new meaning and added value to
every tire.**

It reduces the risk and consequences of
punctures on the road, ensures a safe
and comfortable ride for every driver, and
protects the safety of every passenger.

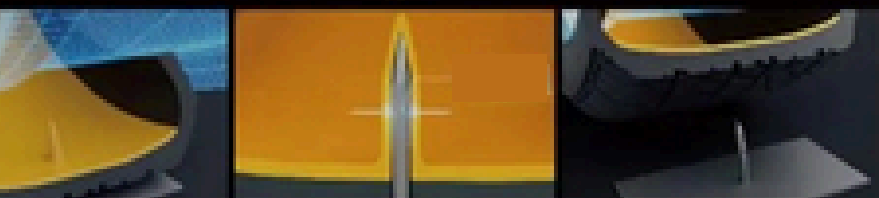


INTERSPEED SAFE TIRE

Intelligent Protection and Driving Safety

Three main causes of tire punctures

- Driving at high speeds
- Punctures caused by sharp objects
- Low tire pressure



During every drive, tires are exposed to the risk of punctures and pressure loss. That's why there's Interspeed SAFE TIRE – advanced self-sealing technology that ensures safe and reliable driving in all conditions.

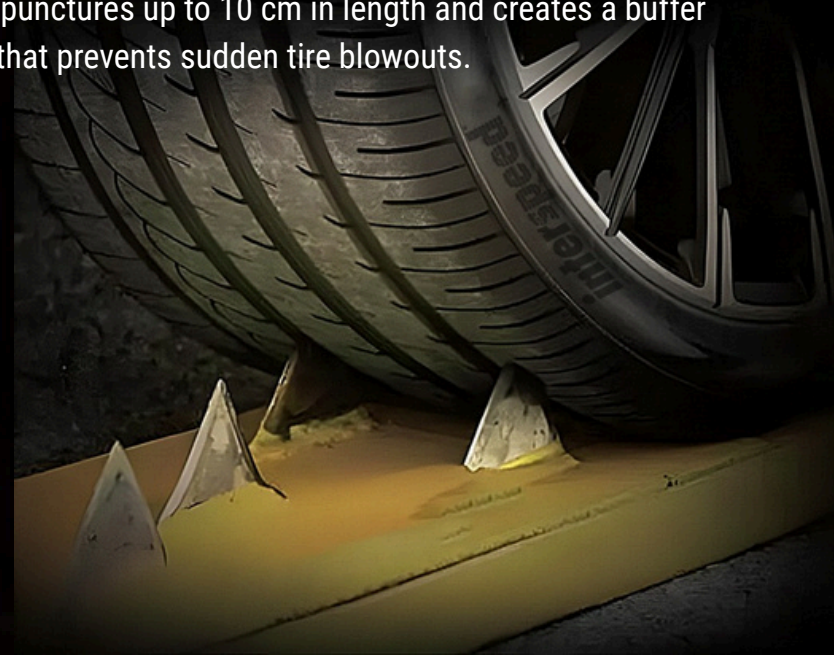
The inner layer with memory function automatically seals openings caused by sharp objects, preventing air loss and maintaining optimal pressure.

Even after the object is removed, the tire seals itself – with no need for towing or repair.

The SAFE TIRE puncture protection compound withstands tread punctures up to 10 cm in length and creates a buffer zone that prevents sudden tire blowouts.



The result: a more stable, safer, and more comfortable ride, with a significantly reduced risk of accidents and complete peace of mind behind the wheel.



There's no need to change your car – by simply filling your existing tires with the SAFE TIRE self-sealing protective compound, you can increase the overall safety and reliability of your vehicle.



PUNCTURE-RESISTANT
TIRES FOR MAXIMUM
DRIVING COMFORT.



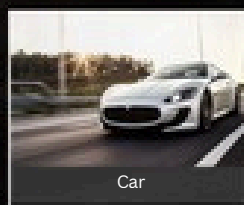
NO PUNCTURES.
NO PRESSURE LOSS.
NO SPARE TIRE.



High Compatibility WIDE APPLICATION | FLEXIBILITY

This product is compatible with most vehicles on the market
whose tire pressure is up to 8 bar.

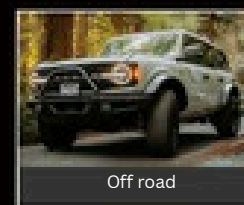
Suitable for more than 95% of vehicle models.



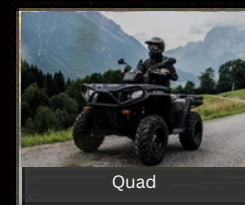
Car



SUV



Off road



Quad



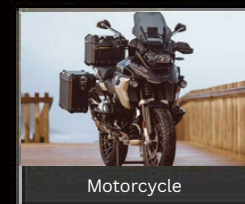
Trucks



Camper



Mini Van



Motorcycle

INSTANT SEALING

It “self-heals” the tire after a puncture, effectively sealing up to 85% of all tread damages caused by nails, screws, and other sharp objects.



EXTENDED PROTECTION ZONE



STABLE PERFORMANCE ACROSS A WIDE TEMPERATURE RANGE

-40°C  140°C



9dB

EXTENDED PROTECTION ZONE

The exact level of noise reduction depends on the type of vehicle, driving speed, and road surface.





Interspeed Group

Partizanska 111
22314 Krnješevci, Srbija
head.office@interspeed.rs
+381 60 0999 675
www.safetire.interspeed.rs



@safetire.interspeed



Scan QR Code

